

4600 Lift and Slide HI System (High Insulation) with thermal break

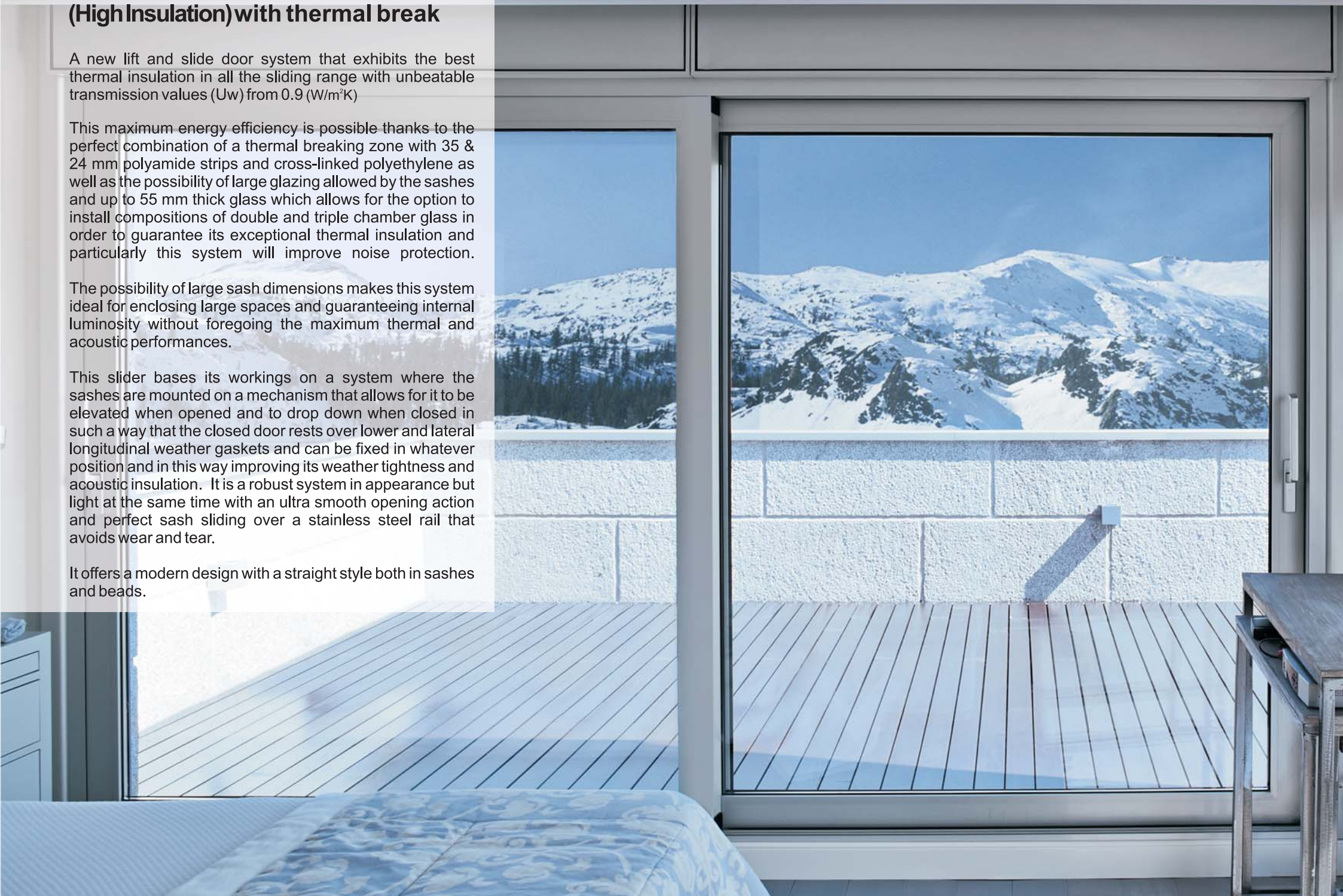
A new lift and slide door system that exhibits the best thermal insulation in all the sliding range with unbeatable transmission values (U_w) from 0.9 (W/m^2K)

This maximum energy efficiency is possible thanks to the perfect combination of a thermal breaking zone with 35 & 24 mm polyamide strips and cross-linked polyethylene as well as the possibility of large glazing allowed by the sashes and up to 55 mm thick glass which allows for the option to install compositions of double and triple chamber glass in order to guarantee its exceptional thermal insulation and particularly this system will improve noise protection.

The possibility of large sash dimensions makes this system ideal for enclosing large spaces and guaranteeing internal luminosity without foregoing the maximum thermal and acoustic performances.

This slider bases its workings on a system where the sashes are mounted on a mechanism that allows for it to be elevated when opened and to drop down when closed in such a way that the closed door rests over lower and lateral longitudinal weather gaskets and can be fixed in whatever position and in this way improving its weather tightness and acoustic insulation. It is a robust system in appearance but light at the same time with an ultra smooth opening action and perfect sash sliding over a stainless steel rail that avoids wear and tear.

It offers a modern design with a straight style both in sashes and beads.



4600 Lift and Slide HI System (High Insulation) with thermal break

Transmittance

Uw from 0.9 (W/m²K)

Please consult typology, dimensions and glass

Acoustic insulation

Maximum glazing: 55 mm.

Maximum acoustic insulation **Rw=43 dBA**

Finishes

Possibility of dual colour

Colour powder coating (RAL, mottled and rough)

Wood effect powder coating

Anti-bacterial powder coating

Anodized

Categories achieved at test centre

Air permeability
(EN 12207:2000): Class 4

Water tightness
(EN 12208:2000): Class 9A

Wind resistance
(EN 12210:2000): Class C5
Reference test 4,0 x 2,4 m. 2 sashes



Sections

Frame 160.6 mm.
251mm. 3 rails

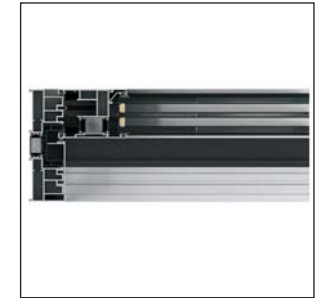
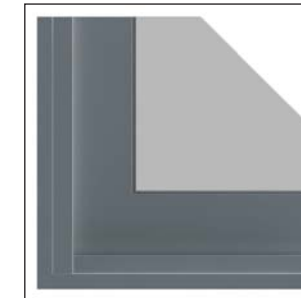
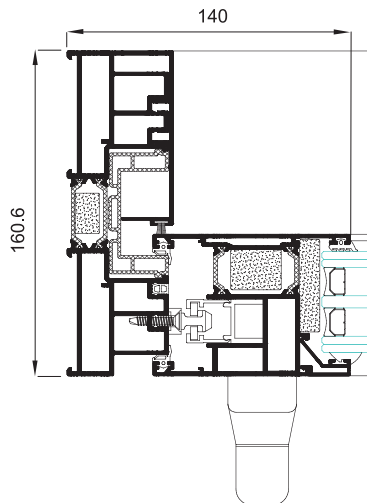
Sash 70 mm.

Longitud varilla poliamida

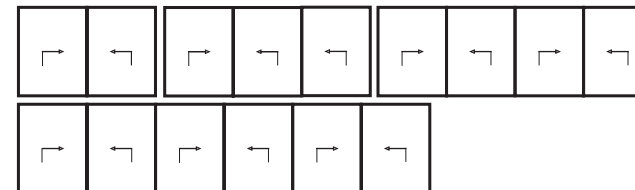
Frame 35 mm. Sash 24 mm.

Profile thickness

Door 2,0 mm.



Opening possibilities



Sliding of 2, 3, 4 & 6 sashes.
Possibility of 3 rails.

Maximum dimensions

Width (L) = 6.700 mm.
Height (H) = 3.200 mm.
2 sashes door

Please consult regarding maximum weight and dimensions for other opening types

Maximum weight/sash

400 Kg.